

# IN-KIND/MATCH & PHILANTHROPY

At UMCHS

2016- 2017

## We have a new process.

We believe that every child deserves an opportunity to grow and learn, to be equipped in such a way that children and their families thrive, and in turn, make a significant contribution to their communities and the future of tomorrow's children. In keeping with that standard we strive to locate funding and resources, both federal and non-federal, to support and provide children and their families with the necessary tools to create happy and healthy futures for this generation and the generations to come. We also believe that it is our responsibility to develop and encourage relationships with other organizations, communities, schools, and people who possess the abilities and resources to provide financial support of Cash and In-Kind services to our programs in the form of materials or volunteer service.

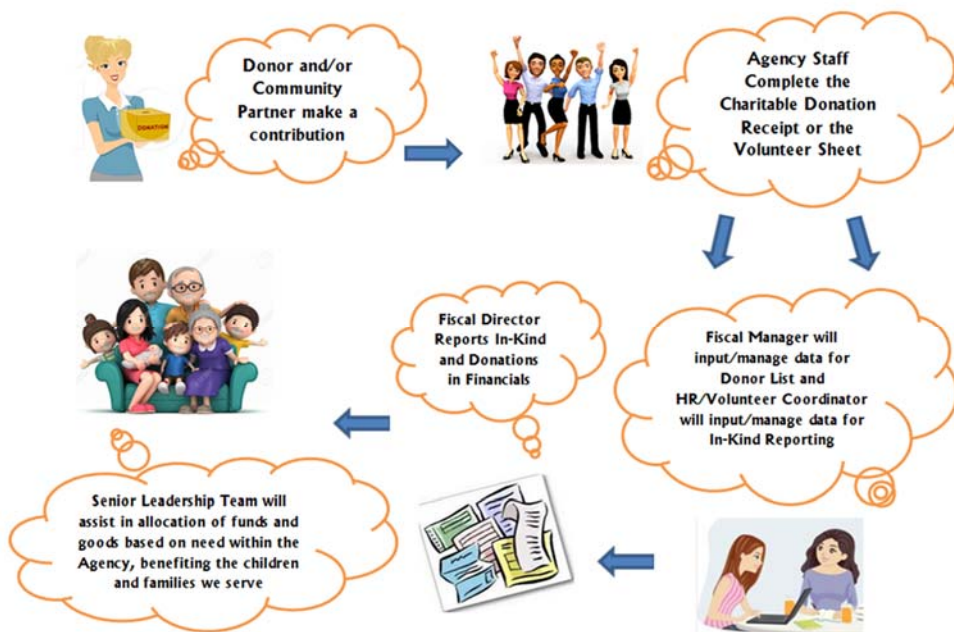
### Q: What is the new process for all staff to follow?

A: Our forms have been consolidated into two easy to use forms:

**Charitable Donation Receipt**-Staff will fill out when donations are given to the agency; any cash or goods.

**Volunteer Sheet**-Staff will assist Volunteers in completing the form to

*UMCHS will utilize a coordinated and unified method of tracking that will ensure that no Match or In-Kind contribution is unused, undervalued or unacknowledged*



document service hours.

### Q: Why is it important to track Donations and Volunteer Time?

A: Some of the agencies grants and contracts have clear rules regarding Cash Match and In-kind, so in order to comply with the requirements of the grants and contracts all staff need to play a role in documenting our Donations and

## Your Donation Team

- Gladys Velazquez
- Samantha Shaw
- Dan Daltoso
- Aaron Treadwell

Please call the Main Office to contact any of the staff listed above: