

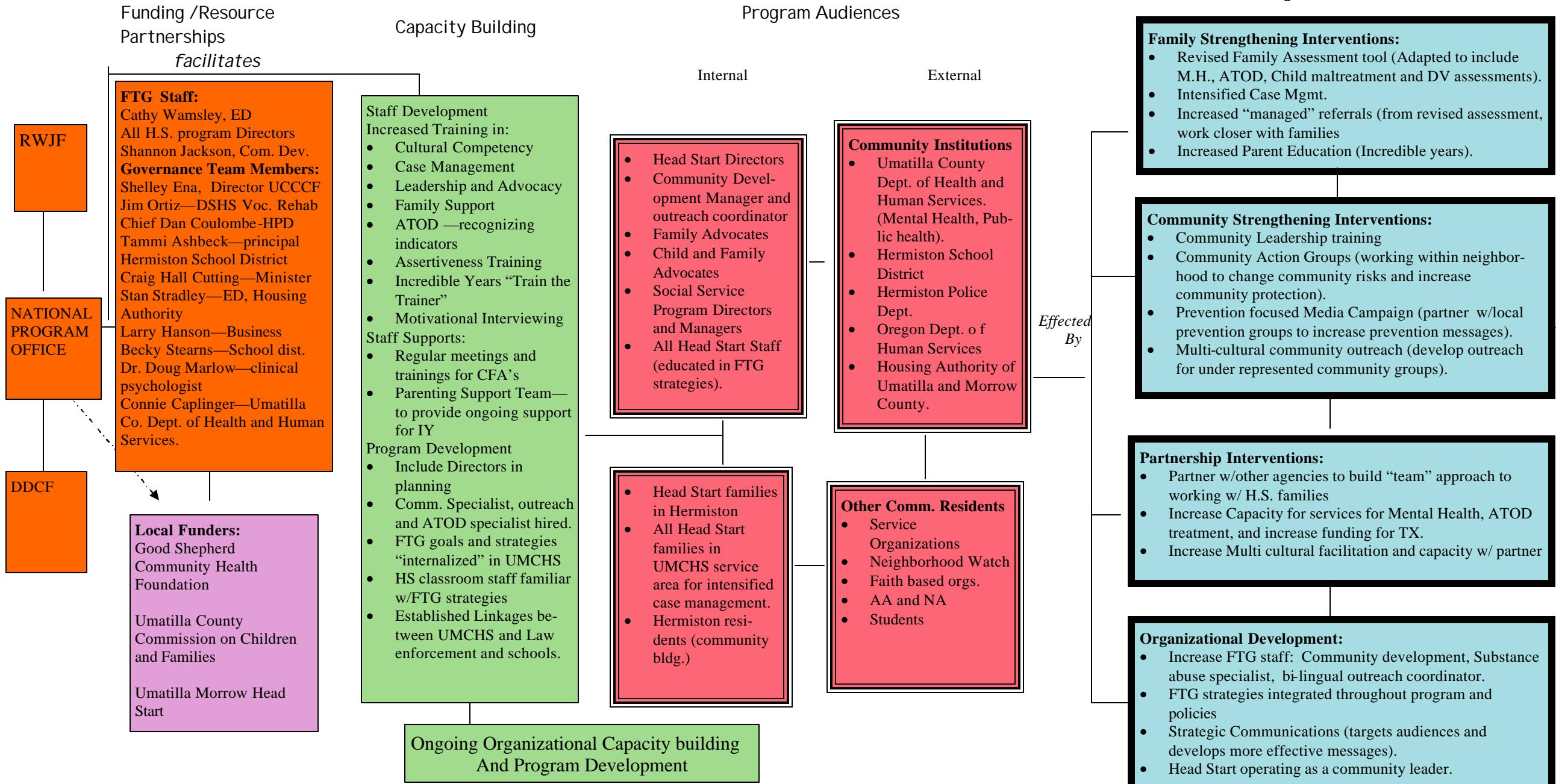
Umatilla Morrow Head Start Logic Model—Revised, November 2003

Who does the Work

Who is Targeted?

What

Program Intervention



Why

Why

Why

Why

Risk and Resilience Focused Change

Short Term

Intermediate

Family

Partnership

Family

Partnership

- Early identification of high risk families (ATOD abuse, child maltreatment, DV, Mental Health issues).
- Increase referrals of families to community resources
- Increase appropriate case management
- Increase involvement with treatment services
- Decrease # of “intrusive” people/agencies
- Increase culturally sensitive services
- Strengthen family management skills
- Increased parental understanding of ATOD abuse and its associated high risk behaviors and its effect on children and families.

- Increase # of families following through on referrals and seeking appropriate assistance
- Increase relationships between community agencies, schools and Head Start
- Increase efficiency in coordination of services to families
- Increase partnerships in the delivery of parent education (IY)
- Increase partnerships between agencies and grassroots organization efforts
- Increase # and diversity of residents participating on local boards and coalitions

- Increased # of strong families
- Improved family strength-based support services
- Reduced ATOD abuse and related behavior in families
- Changed family norms regarding ATOD use
- Decreased # of families in need of ATOD treatment services
- Families will exhibit increased protective factors
- Families will successfully complete treatment
- Strong families will be involved in leadership in the community and model positive behaviors.

- Common language in assessment used by partner agencies
- Common training between agencies established
- Reduced CPS reports of Head Start families
- Decreased # of families in need of treatment services
- Increased availability of treatment services
- Reduced # of high risk children transitioning from Head Start into schools.
- Partners have a process to respond to quickly respond to newly identified families.
- Coordinated media campaign to establish positive norms around ATOD abuse
- Governing boards have increased resident participation.

Community

Organizational

Community

Organizational

- Increase coordination of culturally sensitive services
- Decreased # of child maltreatment reports
- Identification of ATOD services needed (researched and mapped).
- Increase # and diversity of families involved in community/civic/advocacy efforts through leadership training and outreach
- Increased # and diversity of residents volunteering
- Increase outreach and media efforts regarding ATOD and associated high risk behaviors and their effects on the community
- Decrease use of visuals located in the community which market alcohol and tobacco.
- Raised visibility of multi cultural issues and strengths

- Increase skill level of social service staff in identification of family and community risk and protective factors and appropriate referral and use of community resources.
- Increase training of WIC staff (MI training)
- Increased relationships between staff and local agencies, and FTG partners
- Increase # of trainers and # of times Incredible years parenting is offered
- Increase leadership training and advocacy of Head Start staff
- Increase cultural sensitivity of Head Start staff
- Increase understanding of ATOD abuse and associated behaviors by Head Start staff
- Increase integration of FTG into Head Start policy and strategies

- Increased Grassroots community participation
- Increased Cultural, gender, age and substance specific treatment available in the county.
- Community norms around high risk behavior associated with ATOD use has positively changed.
- Increased opportunities for positive family activities in the community
- Decrease in Gang related activities
- Increase in Parent/child participation in the community
- Strong community networks
- Increased # of community leaders making policy decision based upon community risk and protective factors
- Increased strong, local family support
- Decreased ATOD use by youth
- Decreased visuals in the marketing of ATOD

- Increased ability to partner with community agencies at all levels of the organization.
- Adequate Spanish Speaking staff
- Head Start Staff confident utilizing assessment tools, and working with high risk families.
- Culturally appropriate services are fully integrated in Head Start service delivery
- FTG strategies and philosophy fully integrated in Head Start
- Head Start utilizing strategic communications and media
- Head Start has established leadership roles in the communities it serves.

